

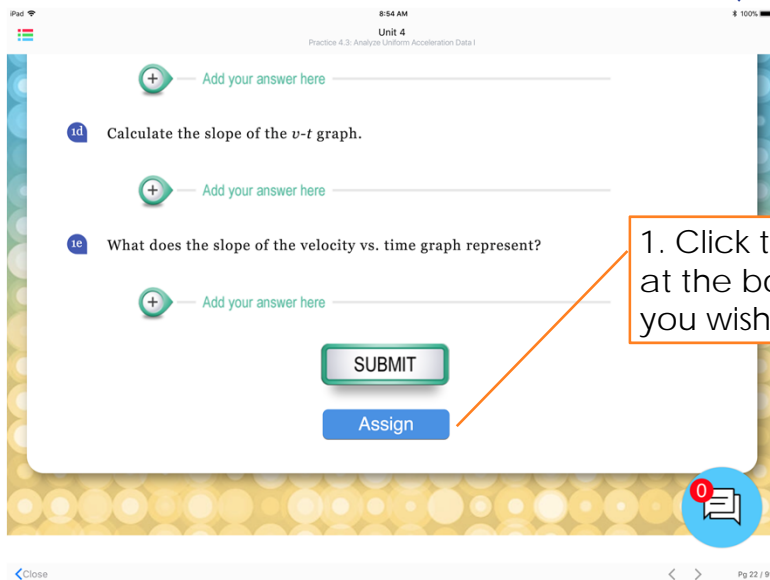
HOW TO SET UP AND SUBMIT ASSIGNMENTS

EXPLORING PHYSICS APP

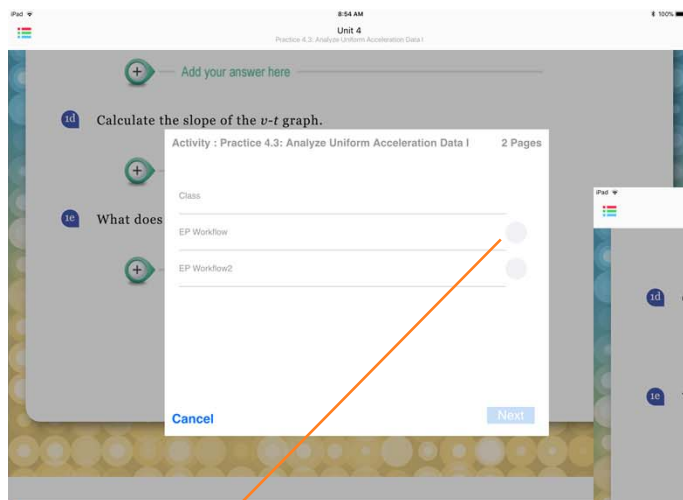
TEACHER AND STUDENT INTERFACES

WWW.EXPLORINGPHYSICS.COM

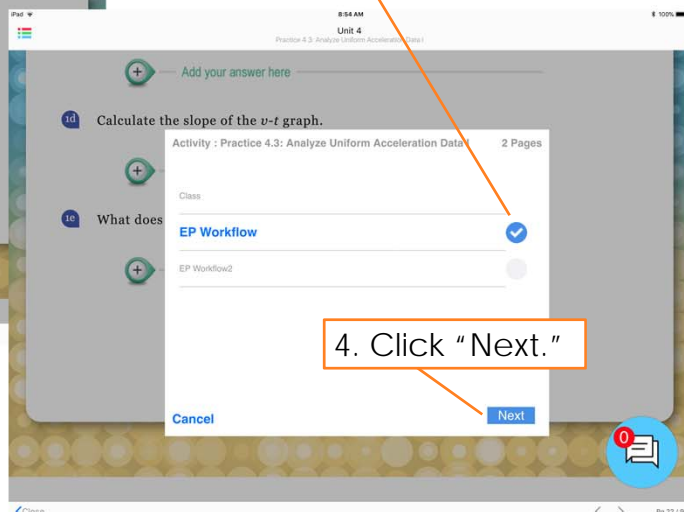
SET UP AN ASSIGNMENT (TEACHER)



www.exploringphysics.com



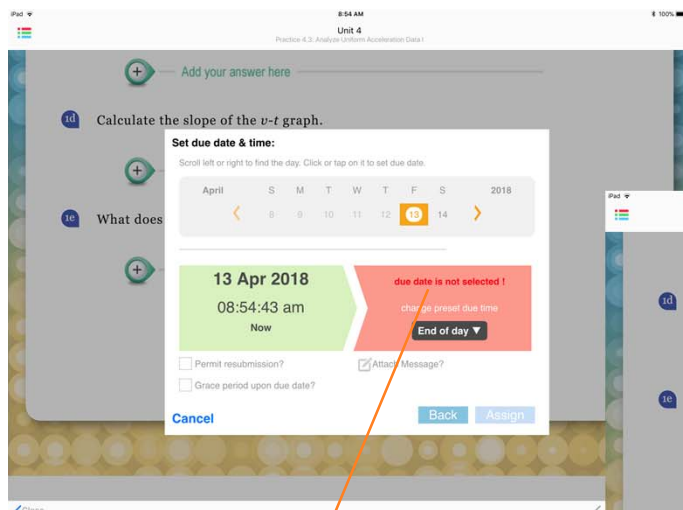
2. Select the class(es) for which the assignment is given.



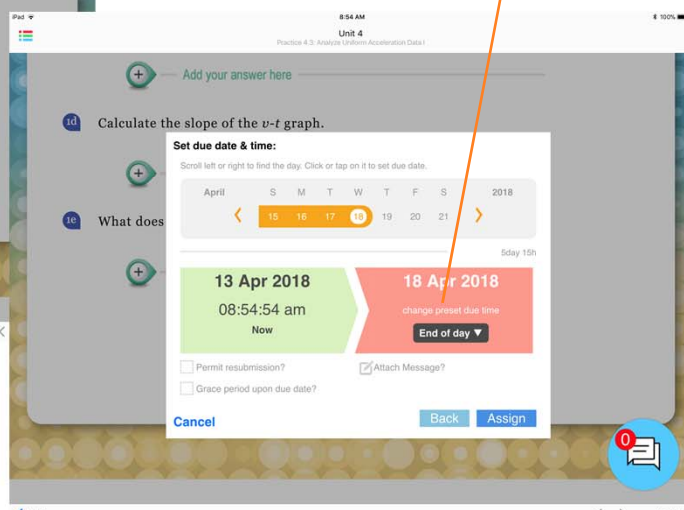
3. The class is selected.

4. Click "Next."

www.exploringphysics.com

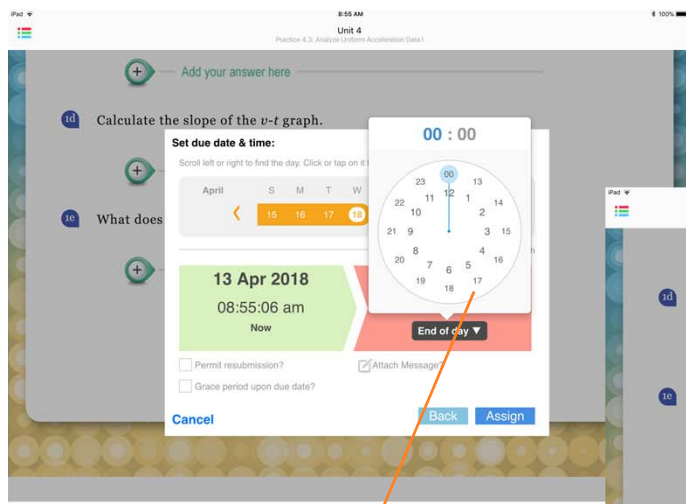


5. Select the date when the assignment is due.



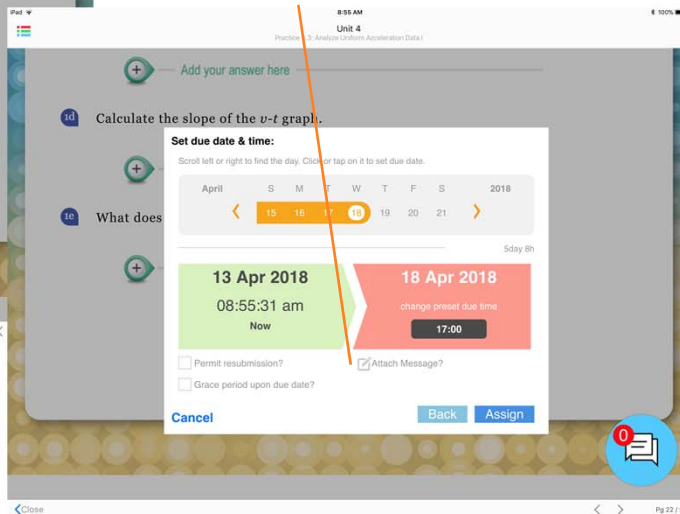
6. Set the time using the "change present due time".

www.exploringphysics.com

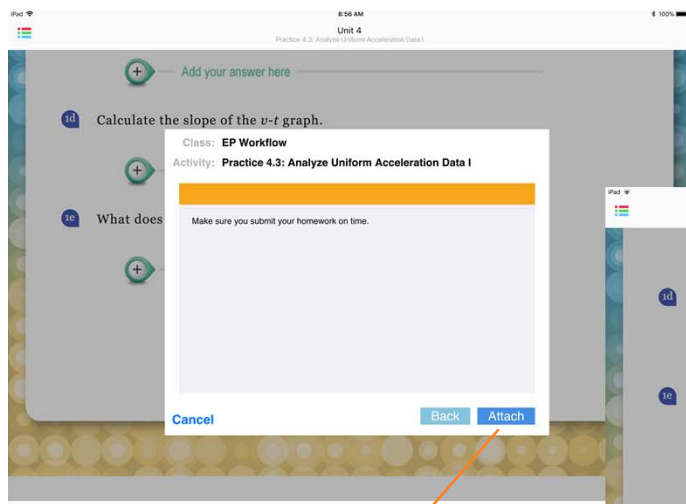


6. Use the clock to set the time (note: 5:00 pm is 17:00).

7. Select "Attach Message" to include a message for students.

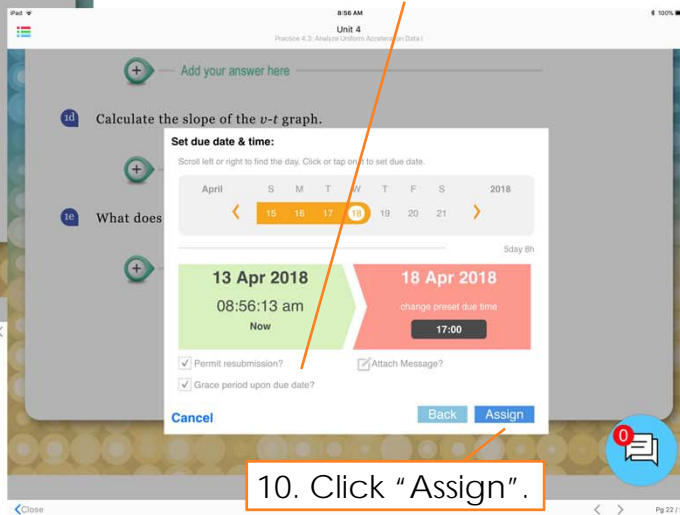


www.exploringphysics.com



8. Type the message and click "Attach".

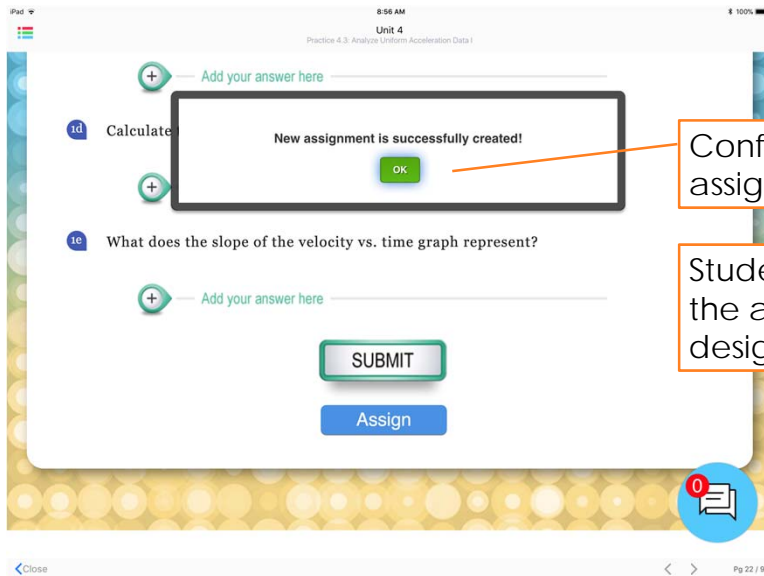
9. Select the other options if you so wish ("Permit resubmission" and "Grace period")



10. Click "Assign".

www.exploringphysics.com

ASSIGNMENT IS SET

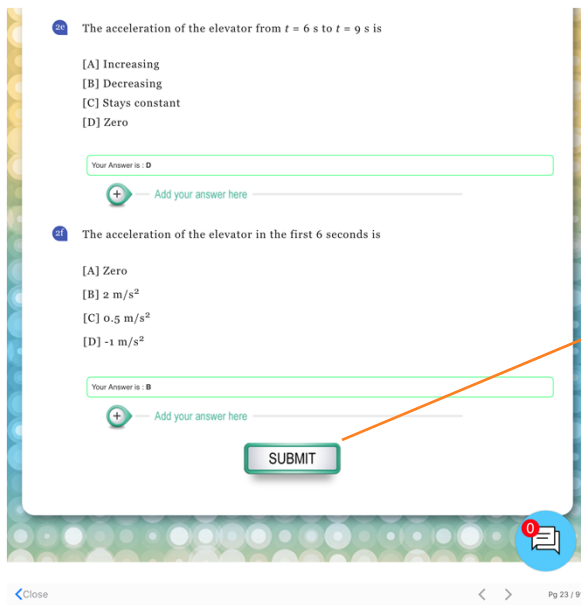


Confirmation of assignment.

Students can now submit the assignment to the designated teacher.

www.exploringphysics.com

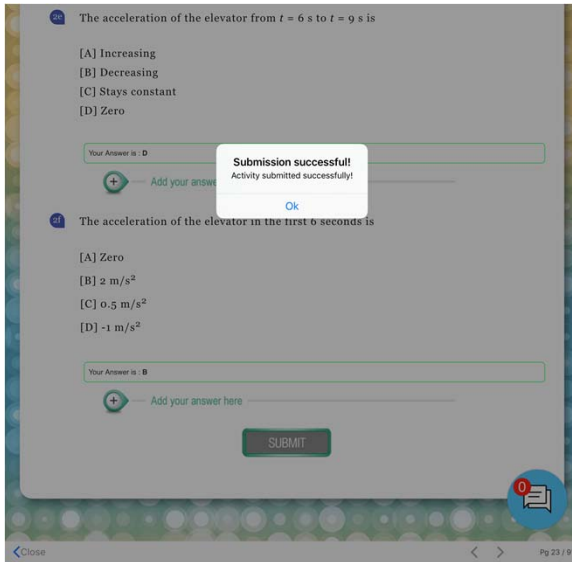
SUBMIT AN ASSIGNMENT (STUDENT)



After completing the assignment, the student clicks the submit button

www.exploringphysics.com

SUBMIT AN ASSIGNMENT (STUDENT)

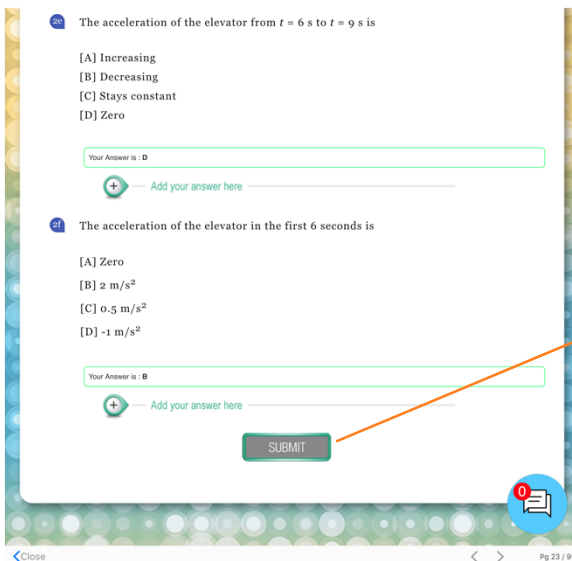


Student receives confirmation of submission.

Submit button turns grey.

www.exploringphysics.com

SUBMIT AN ASSIGNMENT (STUDENT)



Submit button turns grey: the student can no longer submit work for grading.

www.exploringphysics.com